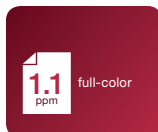
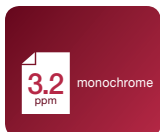


SAVIN®

MP CW2200

Wide Format Color Digital Imaging System

- ✓ Copier
- ✓ Printer
- ✓ Scanner



Add color to wide format workflows

The SAVIN® MP CW2200 combines full-color output with exceptional versatility to meet a wider range of wide format workflow demands. The affordable full-color, low-volume digital imaging system offers print, copy and scan functionality to ensure essential large documents can be captured, saved and shared with incredible ease and simplicity. Present design plans, documents, schematics and more in brilliant colors — exactly the way they were designed.

Versatile performance to do more

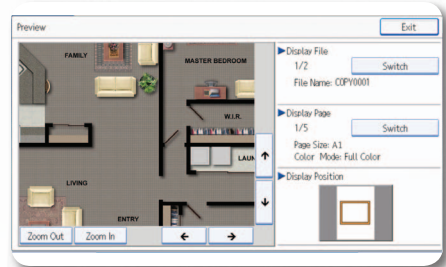
The Savin MP CW2200 offers incredible multifunction performance, including copying, scanning and printing, to streamline low-volume, wide format workloads for CAD-centric organizations, such as architectural, construction and engineering firms. With full-color output, you can create compelling, professional-quality documents to put your work in the best light. Choose from multiple paper sizes and weights in order to meet every demand and manage every project with ease from the device or from the desktop.

Intuitive functionality makes it easy

The Savin MP CW2200 is designed to work the way you do. Take advantage of embedded SDK architecture to integrate highly productive Savin applications such as GlobalScan NX as well as the 4.3" tiltable operator panel to configure workflows and to set up easy, one-touch shortcuts for frequently used tasks and personal preferences. A simplified display and step-by-step animated guide ensure easy operation for every user. Users can also replace proprietary ink cartridges in moments without swapping print heads for longer-lasting performance and less waste.

Advanced scanning streamlines operations

With the Savin MP CW2200 digital imaging system, you can share high-quality color or black-and-white electronic documents quickly and easily at no additional cost. The Savin MP CW2200 lets you scan full-color originals and distribute them via Scan-to-Email/Folder/FTP/HDD. Take advantage of Scan-to-URL to give users in the field immediate access via any Web browser. Save files directly to a USB or SD card for mobile convenience. In addition, full-color thumbnail views allow users to review documents for accuracy and clarity before delivery.



Full-featured capabilities in full color

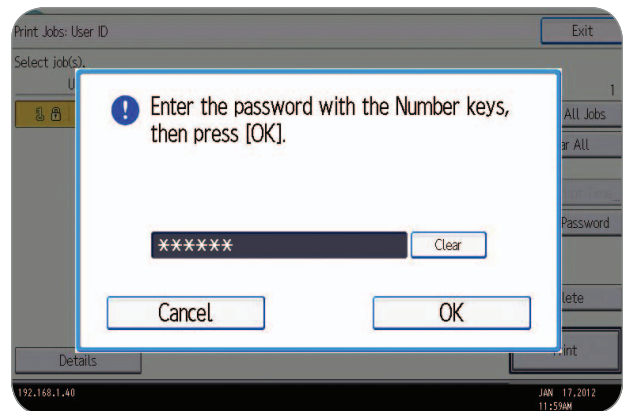
Outstanding paper feeding

Take advantage of uninterrupted workflow and improve your productivity. The Savin MP CW2200 includes multiple paper feeds to ensure users have the right kind of paper to handle every project with consistent speed and efficiency. With optional two-roll printing, the system can accommodate various-sized paper rolls and change them automatically. Users can print on the appropriately sized paper to reduce paper waste without having to walk to the device and spend critical time changing paper manually.



Powerful security

Protect confidential and proprietary documents with a host of advanced security features. With user authentication, print jobs are stored and released only when the authorized user swipes an ID card or enters a password at the device. PDF encryption helps protect the integrity of scanned, password-protected PDFs during distribution. The device includes the DataOverwriteSecurity System (DOSS) feature to automatically overwrite latent images and data on the HDD. Administrators can even restrict access to specific functions for each individual user.



External media convenience

The Savin MP CW2200 is designed to enhance efficiency for every user — especially for those on the go. With the built-in USB and SD card slots, users can Scan-To or generate prints directly at the device using a USB memory or SD card for optimal on-the-go flexibility. It also supports an optional keyboard unit for users who prefer traditional keyboard input to a touch screen. In addition, users can even print from most manufacturers' mobile devices to ensure they have important documents at the most critical times.



Savin MP CW2200

SYSTEM SPECIFICATIONS

General Specifications

Configuration	Console
Scanning Element	CIS Color Scanner (Moving original)
Printing Process	On demand Piezo inkjet system
Ink Type	Pigment-based ink (All 4 colors)
System Memory	3GB
HDD	250GB
Warm-up Time	Less than 40sec
First Copy Time	A0 SEF: (B/W) Speed Priority Mode: 51sec/ Standard Mode: 71sec
(from Standby mode)	(Color) Speed Priority Mode: 155sec/ Standard Mode: 244sec
	A1 LEF: (B/W) Speed Priority Mode: 29sec/ Standard Mode: 41sec
	(Color) Speed Priority Mode: 84sec/ Standard Mode: 131sec
Copy Resolution	600dpi
Original Feed	Sheet
Original Set Position	Center
Original Scan Size	Maximum: 36" x 590" (914mm x 15,000mm)
	Minimum: 8.5" x 8.5" (210mm x 210mm)
Original Paper Weight	Paper Feed Guarantee: 0.035 – 1.0mm
	Image Quality Guarantee: 0.090 – 0.2mm (64 – 190g/m)
	Feed to Carrier Sheet: 0.070mm and less
Original Paper Width	Inches: 8.5" / 9" / 11" / 12" / 17" / 18" / 22" / 24" / 30" / 34" / 36"
	Metric (mm): 210 / 257 / 297 / 364 / 420 / 440 / 490 / 515 / 594 / 610 / 620 / 625 / 660 / 680 / 707 / 728 / 800 / 841 / 880 / 914.4
Output Paper Size	Inches: Maximum Roll Feeder – Width: 36", Length: 590"
	Maximum Bypass – Width 36", Length: 78.7"
	Minimum – Width 11", Length: 8.27"
	Metric: Maximum Roll Feeder – Width: 914.4mm, Length: 15,000mm
	Maximum Bypass – Width 914.4mm, Length: 2,000mm
	Minimum – Width 279.4mm, Length: 210mm
Output Paper Weight	Roll Paper: 0.068-0.2mm (51 – 190g/m)
	Cut Sheet: 0.068-0.4mm (51 – 220g/m)
Roll Paper Width	Inches: 11" / 12" / 15" / 17" / 18" / 22" / 24" / 30" / 34" / 36"
	Metric (mm): 297 / 364 / 420 / 440 / 490 / 515 / 594 / 610 / 620 / 625 / 660 / 680 / 707 / 728 / 800 / 841 / 880 / 914.4
Paper Type	Plain Paper, Recycle Paper, Inkjet Plain Paper, Tracing Paper, Matte Film, Coated Paper, Coated Paper (CAD), Special Paper
Copy Speed (CPM)	A0 SEF: (B/W) Speed Priority Mode: 1.8cpm/Standard Mode: 1.1cpm
	(Color) Speed Priority Mode: 0.6cpm/ Standard Mode: 0.3cpm
	A1 LEF: (B/W) Speed Priority Mode: 3.4cpm/Standard Mode: 2.0cpm
	(Color) Speed Priority Mode: 1.1cpm/ Standard Mode: 0.6cpm
Reproduction Ratio	Metric: 25%, 35.4%, 50%, 70.7%, 141.4%, 200%, 282.8%, 400%
	Engineer (inch): 25%, 32.4%, 50%, 64.7%, 129.4%, 200%, 258.8%, 400%
	Architecture: 25%, 33.3%, 50%, 66.7%, 133.3%, 200%, 266.7%, 400%

Zoom	25% – 400% by 0.1% Step
Multiple Copying	1 to 99
Paper Feeding Capacity	1st Roll and Optional 2nd Roll: One Roll Paper each, Width: 8.5" – 36" (279.4mm – 914mm), Max. length: 150,000mm, Max diameter: 176mm
	Bypass: One sheet
Paper Output Capacity	10 Sheets (Plain Paper)*
	*2" core roll cannot stack because the curvature factor is too small.
Paper Cut Method	Preset size cut/Synchronized cut/ Variable cut
Power Source	NA: 120 – 127V 60Hz, 3.6A; Latin America: 220 – 240V 50 – 60Hz, 1.9A
Max Power Consumption	Less than 180W
Dimensions (WxDxH)	55.1" x 22.1" x 50.3" (1,400 x 560 x 1,280mm)
Weight	Less than 265 lbs (120 kg)

Printer Specifications

Controller Board	Embedded (GW Controller)
CPU	Celeron-M 1.0GHz
RAM	3GB
HDD	250GB
Print Speed	A0 SEF: (B/W) – 1.8ppm (Speed Priority Mode)
	(Color) – 0.6ppm (Speed Priority Mode)
	A1 LEF: (B/W) – 3.2ppm (Speed Priority Mode)
	(Color) – 1.1ppm (Speed Priority Mode)
Print Drivers	Adobe PostScript3, HDI
Supported Print Language	PostScript3, HP-GL, HP-GL2
Print Resolution	Speed Priority Mode: 600dpi x 300dpi
	Standard Mode: 600dpi x 600dpi
	Quality Priority Mode: 600dpi x 600dpi
	Quality Priority Mode for Coated Paper, Film (Matted) and Special Paper: 1200dpi x 1200dpi
	European 136 fonts (PS3)
Font	Yes, Save Ratio 50% (PS Driver)
Ink Save Mode	Standard: Ethernet 100BASE-TX/ 10BASE-T, USB2.0
Interface	Optional: Wireless LAN (IEEE802.11a/b/g), Gigabit Ethernet (1000BASE-T)
Network Protocol	TCP/IP (IP v4, IP v6), IPX/SPX
Standard MIB	MIB-II (RFC1213), Host Resource (RFC1514), Printer MIB (RFC1759)
Private MIB	Savin Original
Network/Operating System	Windows: XP/Vista/Server2003/ Server2008/Server2008R2/7
	Mac: OS 10.2 – 10.6 or later
	Citrix Presentation Server 4.5 (32bit/64bit)
	Citrix XenApp5.0 (32bit/64bit)
	Citrix XenApp6.0 (64bit)
Supported CAD version	AutoCAD 2004/2005/2006/2007/2008/ 2009/2010/2011/2012
(HDI Driver)	Yes
One Direction	Yes
Media to Print	Yes (JPEG/TIFF/PDF)
(Print from USB/SD)	
Unauthorized Copy Prevention	Yes (PS driver)
WSD Printer	Yes
Color Matching	Yes
POP	Yes
CUD	Yes

Scanner Specifications

Color Scan	Standard
Scan to Multimedia	Standard
Media to Print	Standard
Scanning Speed	B/W: 600dpi: 3.14ips, 80mm/s
	Color: 600dpi: 1.05ips, 26.7mm/s
	Standard: 100 / 200 / 300 / 400 / 600 dpi
	Default: 200 dpi
Scanning Resolution	Auto detect, Preset size, Custom size
Scan Detection	Standard
RGB Support	Standard: Ethernet 100BASE-TX/ 10BASE-T, USB2.0, USB Host, SD card slot
Network Interface	Optional: Gigabit Ethernet (1000BASE-T), Wireless LAN (IEEE802.11a/b/g)
Protocol	Network: TCP/IP, Scan-to-E-mail: SMTP, Scan-to-Folder: SMB, FTP
Compression Method	B/W: TIFF (MH, MR, MMR), Grayscale Full Color: JPEG (5 levels)
Scan Mode	B/W: Text/Line Art (Default), Text, Text/ Photo, Grayscale
	Full Color: Text/Photo, Photo
Image Density	Auto Density Selection effective only in B/W and Grayscale scan mode
	Manual: 7 levels (Effective in B&W/ Grayscale and Full-Color scan mode)
Image Rotation	Yes
SADF/Batch Mode	Yes
Mixed Size Mode	Yes

External Options

2nd Roll Unit	
Roll Paper Size	Maximum Width: 36" (914mm)
	Minimum Width: 11" (279.4mm)
Roll Paper Diameter	6.92" (176mm)
Dimensions (WxHxD)	43.6" x 15.7" x 17" (1,108 x 398 x 432mm)
Weight	31.9 lb. (14.5 kg)
Roll Holder Unit	
Dimensions (WxHxD)	41.3" x 6.3" x 6.3 (1,049 x 160 x 160mm)
Weight	3.3 lb. (1.5 kg)

Consumables*

Starter (Included):	
Print Cartridge Black	60ML
Print Cartridge Cyan	28ML
Print Cartridge Magenta	28ML
Print Cartridge Yellow	28ML
For Purchase:	
Print Cartridge Black	200ML
Print Cartridge Cyan	100ML
Print Cartridge Magenta	100ML
Print Cartridge Yellow	100ML

*For maximum performance and yield, we recommend using genuine Savin parts and supplies.

Warranty

The Savin MP CW2200 is under warranty against defects for a period of one year from the date of purchase. Consumables are under warranty for a period of 90 days from the date of purchase or until depleted, whichever comes first. Please refer to warranty documents shipped with the product for more details.