

SAVIN®

5100WD/7140WD

Wide Format

PRODUCTIVE > RELIABLE > FAST > HIGH-VOLUME > **COLOR >**



**A high-volume, high-speed system
with built-in color scanning.**

High volume, color scanning, fast output. Everything you need for maximum productivity.

SAVIN® 5100WD and 7140WD Wide Format Digital Imaging Systems allow for fast printing even as you capture, share and save all of your day-to-day hard-copy document processes—color markups, edits, penciled-in changes and as-builts—into your ever-changing project workflow. The Savin 5100WD and 7140WD Wide Format Digital Imaging Systems are truly high productivity tools that can help you work smarter, collaborate easier, share faster and finish your projects on-time and on-budget.



The large, LCD touch-panel display makes operation simple and intuitive.

Built-In Productivity

Add up the fast output speed, user simplicity and smart engineering of the Savin 5100WD and 7140WD Wide Format Digital Imaging Systems, and you get systems that will be the workhorse in your reprographic area for years to come.

- Jump-start your workflow productivity with output speeds up to 10 or 14 documents per minute.
- Share the productivity from day one, thanks to the redesigned, super-wide color LCD operation panel.

- Reduce paper and toner usage by previewing document thumbnails before printing or scanning.
- Simplify and enlarge displays with the touch of a button for easier walkup use.
- Change paper and toner in a snap—clear jams, too—through the easy-to-use front-loading drawers and clamshell engineering.

Streamline Your Workflow

Whether you use the Savin 5100WD and 7140WD Wide Format Digital Imaging Systems with a dedicated professional operator, have walkup users or work from a remote PC, you can configure exactly the system you need to optimize your unique workflow.

- Eliminate tedious document updating by capturing as-builts, handwritten, on-site changes and color markups, and then integrating them with satellite imagery, photographs and maps to create complete bid sets.
- Create and distribute documents with a comprehensive selection of Scan-to options.
- Scan project documents directly into an electronic plan room for easy viewing by other architects, engineers or contractors.
- Simplify document access by temporarily storing documents on the 320 GB (160 x 2) "Document Server" and view them on the control panel or your PC for reprinting, as needed.
- Increase your ability to handle high-output volume with optional front and back multi-stackers.

Manage Your System Remotely

- Use WebImageMonitor to view documents in the Document Server, monitor supply levels, check job details, assign e-mail notification to key team members, remotely cancel jobs and reboot the system from anywhere on the network.
- Use the Document Server to assemble job sets—remotely or at the system itself—from prints, copies and scans.
- Manage advanced security features, including Windows Authentication and PDF Encryption, to keep your documents safe at every stage of printing and distribution.

Printer Controller Choices: Simple, Versatile, Secure

A fast, powerful external print controller supports a variety of file formats in the CAD market. While the single footprint, embedded printer option easily handles the most common file formats and maximizes floor space.

Built-In Printing

- Driver support for Windows—PostScript, HDI and a Web Print Tool to build job sets from HP-GL, TIFF and CALS file formats.
- The built-in security features included with the RPCS drivers provide piece of mind—Lock print, Hold print and Stored print.

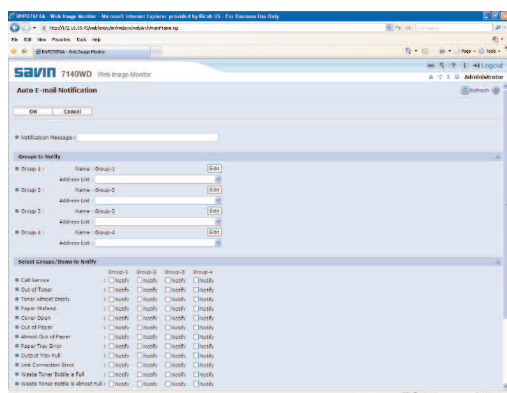
RW-7140 Printer Controller on External PC: Advanced, Flexible, Fast

- Send print jobs securely with a host of built-in security options.
- Minimize the learning curve with drivers similar to standard print drivers.
- Print documents to any device on your network, including inkjet printers.
- Monitor, calculate and analyze your printing and scanning costs by user, account and project.
- Enjoy secure, Web-enabled print job creation right out of the box.
- Ensure consistent high quality output on every printing device with Central Management and Central RIP.
- Manage print jobs efficiently with the PlotBase Print Queue.

Scanning: Built-In or External

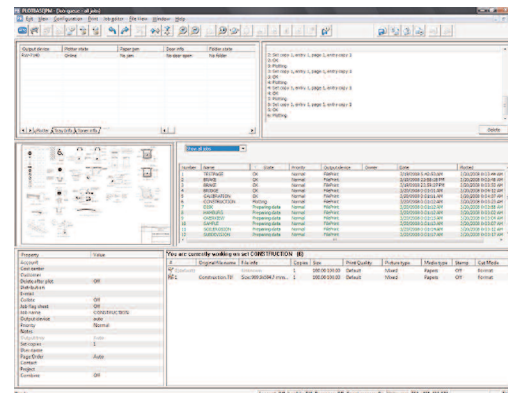
Changes and additions or "redlines" are a fact of life for architects, engineers and contractors. The Savin 5100WD and 7140WD Wide Format Digital Imaging Systems let you capture and distribute these changes—in color—through a built-in color scanner and the standard Scan-to functions.

WebImageMonitor



WebImageMonitor allows you to view documents in the Document Server, monitor supply levels, check job details, assign e-mail notification to key team members, remotely cancel jobs, and much more—right from your desktop.

Plotbase



New Plotbase software improves functionality over previous versions, including color calibration, account tracking and printing to multiple output devices including inkjet printers.

5100WD/7140WD Wide Format Digital Imaging System

PRODUCTIVE > RELIABLE > FAST > HIGH-VOLUME > COLOR >

Embedded Controller

Client PC Drivers (Windows OS)

HDI (print directly from AutoCAD)
RPCS (Windows based)
Postscript (PDF and PostScript files)
Web Print Tool (CALS, HP-GL 1/2, TIFFs)
(Browser based)



Client PC Drivers (Mac OS)

HDI (print directly from AutoCAD)
RPCS (Mac based)
Postscript (PDF and PostScript files)
Web Print Tool (CALS, HP-GL 1/2, TIFFs)
(Browser based)



5100WD/7140WD

Built-In Color Scanner

- Minimize system footprint with the embedded color scanner.
- Scan documents of extensive sizes and types, including architectural drawings, sepias, blueprints, detailed maps, folded or wrinkled documents, oversized drawings, photos or posters with unrivaled speed and image quality.
- Scan your documents directly to e-mail, SMB, Folder, FTP, URL, NCP and Document Server.

Scanning with the Optional RW-7140 Controller

- Capture crystal clear B&W 600 DPI scans or enhance your color output from an inkjet printer with closed-loop calibration, improving your scanning and printing workflow.
- Speed up the capture of changes and additions by scanning your marked-up drawings in color, and then editing and merging to overlay on other files.
- Ensure easy retrieval of stored documents by scanning documents directly to archive while immediately capturing key metadata, such as project name, account number, customer name, page number, title block, etc.
- Scan single or multi-page documents directly to e-mail, FTP or NCP.
- Use the color editor to reduce noise, change alignment, optimize the histogram, improve black & white point type, and crop or scale images—and then print to the Savin 5100WD, 7140WD or an inkjet.

Built to Last

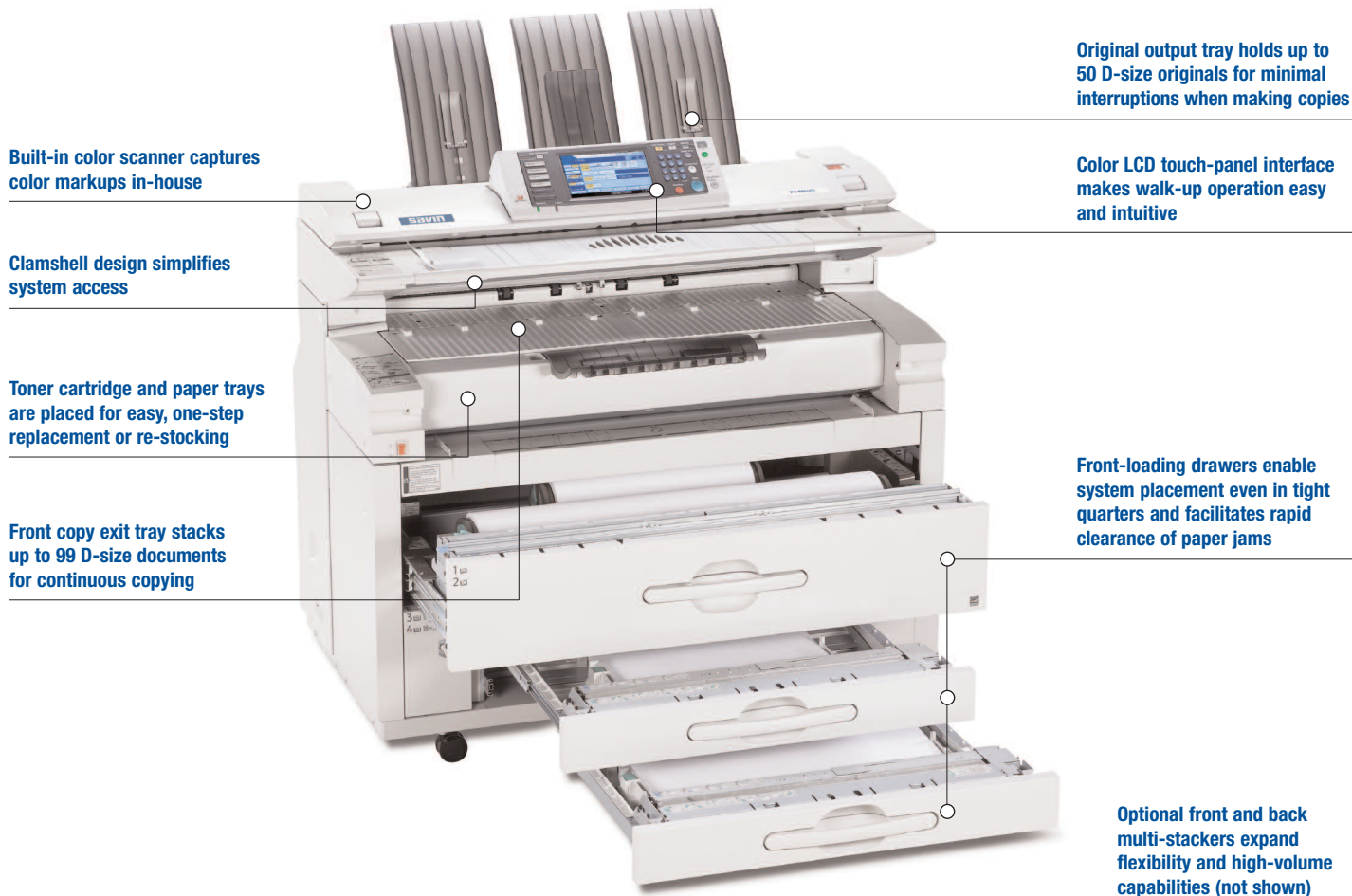
The Savin 5100WD and 7140WD Wide Format Digital Imaging Systems are tough and durable Savin products, designed to be a long-term investment for your organization—even in the most demanding environments.

- Count on the Savin 5100WD and 7140WD's durable materials and reliable engine design to handle monthly volumes comparable to much higher priced products.
- Maximize your Total Cost of Ownership (TCO) by investing in a system with an exceptionally long life expectancy.

The Total Green Office Solution

Savin continues its long-standing commitment to developing office solutions with environmentally friendly and superior energy- and supply-saving features, without compromising productivity.





Built-in color scanner captures color markups in-house

Clamshell design simplifies system access

Toner cartridge and paper trays are placed for easy, one-step replacement or re-stocking

Front copy exit tray stacks up to 99 D-size documents for continuous copying

Original output tray holds up to 50 D-size originals for minimal interruptions when making copies

Color LCD touch-panel interface makes walk-up operation easy and intuitive

Front-loading drawers enable system placement even in tight quarters and facilitates rapid clearance of paper jams

Optional front and back multi-stackers expand flexibility and high-volume capabilities (not shown)

RW-7140 External Controller

Client PC (Windows OS)

- PlotClient (Job submission tool to Plotbase)
- PlotClient Web
- WINPRINT (Send office documents through Windows driver to Plotbase)
- PlotClient HDI (Send AutoCAD documents to Plotbase)



Client PC Drivers with Mac OS

- PlotClient Mac (Jobs submission tool to Plotbase)



RW-7140 Server PC
 Plotbase
 (Printing software for RW-Controller)
 PlotClient Web
 RW-7140 Scan Tool



5100WD/7140WD



Wide Format Inkjet
 Print and Manage 1 Inkjet on Network



SPECIFICATIONS

Configuration	Console
Copy/Printing Process	Electro-photographic printing
Paper Source	2 roll paper feeder (standard) 2 roll paper feeder (optional)* 2 drawer paper cassette trays (optional)*
	*Cannot be installed simultaneously
Warm-Up Time	Less than 120 Seconds
First Copy	10 seconds (D-size)
Copying Speed	7140WD: 14 ppm (D-size); 5100WD: 10 ppm (D-size)
Resolution	600 dpi x 600 dpi
Grayscale Scanning	256 levels
Grayscale Printing	2 levels
Reduction/Enlargement	18 presets; 25% to 400% by 0.1% increments
Multiple Copies	1 to 99 (ten key input)
Cutting Method	Synchronized, preset cut, variable cut
Memory Capacity	1,024 MB (Copy/Printer); 2,048 MB (required with scanner option)
Standard Hard Drive	320 GB (160 x 2)
PC Interface	Standard connection to external PC for RW-7140 controller
Original/Copy Size	Maximum: 7140WD: 36" x 1180" (98.4 ft.); 5100WD: 36" x 590" (49.2'); Minimum: 8.5" x 8.5"; 36" x 78" bypass
Original Exits	Rear (upper), Original rear exit (straight through), Original upper exit
Copy Exits	Front: 99 Sheets (Plain Paper D-size LEF) Back: 10 Sheets (Plain Paper D-size LEF)
Power Source	208 – 240V 15A 60Hz (NEMA 6 – 20R)
Max Power Consumption	3kW per hour
Dimensions (WxDxH)	49.2" x 29.7" x 47.2"
Weight	507 lbs.

COPIER FEATURES

- 2 Drawer Cut Sheet Paper Tray (option)
- Auto Paper Selection (APS)
- Auto Reduce/Enlargement, User Auto Reduce/Enlargement, Preset Reduce/Enlargement, Zoom, Size Magnification, Directional Magnification
- Directional Size Magnification (percentage and mm/inch), Fine Magnification
- Electronic Sort
- Image Overlay, Format Overlay, Negative/Positive, Mirroring, Double Copy, Repeat Copy, Combine Images
- Job Interrupt
- Job Program (up to 10 jobs)
- Manage System and Security Settings, Document Server, Printer and Scanner Features
- Margin Adjustment
- Preset Stamps, User Preset Stamps, Date Stamp, Page Stamp
- Standard 320 GB Hard Disk Drive: Store Up to 3,000 Documents
- User Tools, Manage System and Security Settings, Document Server, Printer and Scanner Features

COPIER OPTIONS

Paper Cassette Tray	2 drawer paper cassette; adjustable up to 18" x 24". Holds up to 250 sheets x 2 (17 lbs. – 20 lbs.)
Roll Feeder	2 roll feeder option; holds an additional 2 rolls (4 rolls total)
Roll Holders	2 holders, max roll diameter 3" core

PRINTER OPTION TYPE W7140 (Option)

Controller Board	Embedded
Print Speed	7140WD: 14 ppm D-size LEF, 7 ppm E-size SEF; 5100WD: 10 ppm D-size LEF, 5 ppm E-size SEF
Print Resolution	Up to 600 dpi
HDD	320 GB (160 x 2) (Shared with other applications such as Copy/Scanner)
Supported File Formats	HP-GL, HP-GL2, HP-RTL, TIFF, PostScript/PDF, CALS, MS Office File Formats, JPEGs HDI Driver: DWG

SCANNER OPTION TYPE W7140 (Option)

Controller Board	Embedded
Scan Speed	7140WD and 5100WD: 1.75 ips – 13 ips @ 600 dpi
Scan Resolution	150 dpi to 600 dpi; Twain: up to 1200 dpi
Scanner Features	Scan-to-Email, Scan-to-Folder, Network TWAIN, Scan-to-NCP, Scan-to-FTP, Scan-to-SMB, Scan-to-Document Server
Edit	Erase Border, Positive/Negative, Mirror Image
Preview	Full View: 18" x 24"; Section Preview: 36" x 48"
File Formats	Multi page TIFF, Single page TIFF, Multi page PDF, Single page PDF, Single page JPEG

PRINTER CONTROLLER RW-7140 (Option)

Controller Type	External PC Server (PC not included, must be purchased separately from appropriate vendor)
Print Controller	7140WD: 7 ppm E-size SEF, 14 ppm D-size LEF; 5100WD: 5 ppm E-size SEF, 10 ppm D-size LEF
Supported File Formats	Standard: HP-GL, HP-GL2, HP-RTL, TIFF, Calcomp906/907, WMF, BMP, CALS (1&2), T6X, CIT, PCX, RLC, Intergraph, Windows Metafile, Windows OS/2 Bitmap, DWG, JPEG Option: DWG/DXF/DWF (with installation of AutoCAD application), VIC, CGM, Postscript
Client PC OS Support	Windows: Windows 2000, XP (32 and 64 bit), Vista (32 and 64 bit) Mac: From OS8.6-10.4 (client PC) Linux: Redhat Linux 6.x-7.1 HP-UX 10.x/11.x Sun Solaris 2.6/7.x/8.x SCO OpenServer 5.0x

PC Requirements

Operating System	Windows XP Professional 32-bit; Microsoft Vista 32-bit
Processor	Recommended: Intel Celeron with 2GHz or higher 2.0 or higher x 1 2 GB
PCI Interface Slot Recommended	
RAM Memory	
Hard Drive	At least 100 GB free space
Network Interface	10/100 Base-T Ethernet, TCP/IP configuration
Monitor	At least 1,024 x 768 or higher/ Recommended: 1,280 x 1024
Network Protocol (Server)	TCP/IP, IPX/SPX, lpr/lpq, HTML, SMB or Novell 6.5 SP6 with Novell Client 4.91 SP3, Unix

PRINT CONTROLLER FEATURES

- Auto Paper Select
- Collate
- Color Editing Tools
- Combine Images
- Cut Mode
- Distributive Printing
- Limitless Paper Feed
- Locked Print
- Output Tray Selection
- Output to One Inkjet
- Paper Remaining Level
- Pen Settings Preview Print
- Print Queue Management
- Reduce/Enlarge
- Sample Print Setting – Build Job Sets from Multiple File Formats
- Simultaneous Printing and Scanning
- Stamping
- Title Block Setting

SCANNER RW-7140 (Option to the RW-7140 Print Controller)

Controller Type	External PC Server
Maximum Continuous	14 spm D-size LEF (200 dpi, 1 bit)
Scan Speed	7 spm E-size SEF (200 dpi, 1 bit)
Resolution	150 – 600 dpi (1200 dpi with enhancement)
Scan Size	7140WD: Min: 8.5" x 8.5" – Max: 36" x 98.4 ft; 5100WD: Min: 8.5" x 8.5" – Max: 36" x 49.2 ft
File Format	Standard: TIFF (single/multi page, uncompressed/G3/G4), T6X, BMP, RLC, HP-RTL, PCX, CALS 1&2, Option: PDF (single/multi page), DWF, DWG
Scanner Software	SCANTOOL Software SCANTOOL Color Editor
Controller Type	Same as printer controller spec.
Resolution	150 – 600 dpi (1200 dpi with enhancement)

SCANNER FEATURES

- Authentication Modes
- Closed-Loop Calibration
- Color Editing
- Contrast Setting Integrated
- Continuous Input
- Invert
- Mirror/Positive/Negative
- Multiple Scan Settings
- Preview While Settings
- Reading Area Setting
- RGB (24 bit), Grey, B&W
- Rotation
- Scan Modes
- Scan-to-Archive
- Scan-to-Email
- Scan-to-Folder
- Scan-to-FTP
- Scan-to-NCP
- Scan-to-SMB

CONTROLLER OPTIONS

- CGM (Computer Graphics Metafile)
- DWG/DXF/DWF
- PostScript 3
- Scan Option
- Scan to DWF (w/scan option)
- VIC

Bringing Savin Value to Your Organization

Savin technology offers a diverse portfolio of solutions to help your organization stay competitive and move ahead. Let Savin show you how to empower your business to improve critical processes, keep information secure, ensure compliance and promote environmental sustainability while reducing the total cost of ownership.

Savin Five Dedrick Place, West Caldwell, NJ 07006

SAVIN® is a registered trademark of Ricoh Americas Corporation. All other trademarks are the property of their respective owners. Print speed may be affected by network, application or PC performance. Specifications and external appearances are subject to change without notice. Products are shown with optional features.

